

Contrabass

Festmusik des Salzkammergut Mozartfestivals

Peter WesenAuer, WWV 204

♩ = 128

Measures 1-8: Bass clef, key signature of two flats (B-flat and E-flat). Measure 1: 4/4 time signature, quarter note G2. Measure 2: 4/4 time signature, quarter note G2. Measure 3: 2/4 time signature, quarter note G2. Measure 4: 4/4 time signature, quarter note G2. Measure 5: 4/4 time signature, quarter note G2. Measure 6: 4/4 time signature, quarter note G2. Measure 7: 4/4 time signature, quarter note G2. Measure 8: 4/4 time signature, quarter note G2. Dynamics: *fp*.

9

Measures 9-16: Bass clef, key signature of two flats. Measure 9: 4/4 time signature, quarter note G2. Measure 10: 4/4 time signature, quarter note G2. Measure 11: 2/4 time signature, quarter note G2. Measure 12: 4/4 time signature, quarter note G2. Measure 13: 4/4 time signature, quarter note G2. Measure 14: 4/4 time signature, quarter note G2. Measure 15: 4/4 time signature, quarter note G2. Measure 16: 4/4 time signature, quarter note G2. Dynamics: *fp*.

1♩ = 142

Measures 17-20: Bass clef, key signature of two flats. Measure 17: 7/8 time signature, eighth note G2. Measure 18: 3/4 time signature, eighth note G2. Measure 19: 7/8 time signature, eighth note G2. Measure 20: 3/4 time signature, eighth note G2. Dynamics: *f*.

21

Measures 21-25: Bass clef, key signature of two flats. Measure 21: 3/4 time signature, eighth note G2. Measure 22: 7/8 time signature, eighth note G2. Measure 23: 3/4 time signature, eighth note G2. Measure 24: 7/8 time signature, eighth note G2. Measure 25: 3/4 time signature, eighth note G2. Dynamics: *f*.

26

Measures 26-30: Bass clef, key signature of two flats. Measure 26: 7/8 time signature, eighth note G2. Measure 27: 3/4 time signature, eighth note G2. Measure 28: 7/8 time signature, eighth note G2. Measure 29: 3/4 time signature, eighth note G2. Measure 30: 7/8 time signature, eighth note G2. Dynamics: *f*.

31

Measures 31-35: Bass clef, key signature of two flats. Measure 31: 3/4 time signature, eighth note G2. Measure 32: 7/8 time signature, eighth note G2. Measure 33: 3/4 time signature, eighth note G2. Measure 34: 7/8 time signature, eighth note G2. Measure 35: 3/4 time signature, eighth note G2. Dynamics: *p*.

36

Measures 36-41: Bass clef, key signature of two flats. Measure 36: 3/4 time signature, eighth note G2. Measure 37: 3/4 time signature, eighth note G2. Measure 38: 3/4 time signature, eighth note G2. Measure 39: 7/8 time signature, eighth note G2. Measure 40: 3/4 time signature, eighth note G2. Measure 41: 7/8 time signature, eighth note G2. Dynamics: *f* and *p*.

42

Measures 42-47: Bass clef, key signature of two flats. Measure 42: 7/8 time signature, eighth note G2. Measure 43: 3/4 time signature, eighth note G2. Measure 44: 7/8 time signature, eighth note G2. Measure 45: 2/4 time signature, eighth note G2. Measure 46: 7/8 time signature, eighth note G2. Measure 47: 3/4 time signature, eighth note G2. Dynamics: *f*.

48

Measures 48-53: Bass clef, key signature of two flats. Measure 48: 7/8 time signature, eighth note G2. Measure 49: 3/4 time signature, eighth note G2. Measure 50: 7/8 time signature, eighth note G2. Measure 51: 3/4 time signature, eighth note G2. Measure 52: 7/8 time signature, eighth note G2. Measure 53: 3/4 time signature, eighth note G2. Dynamics: *f*.

53



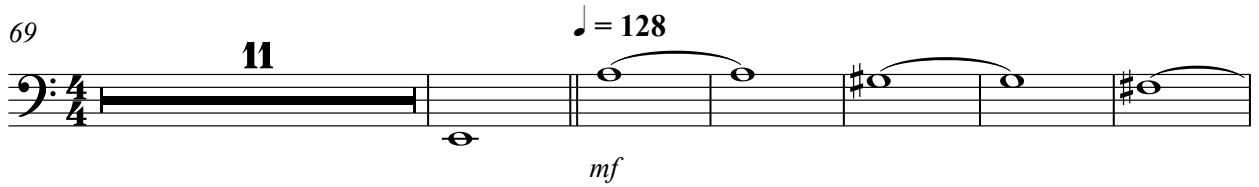
58



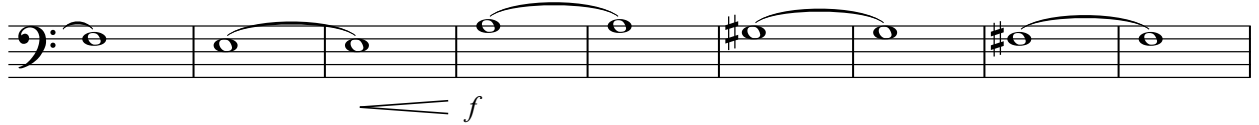
64



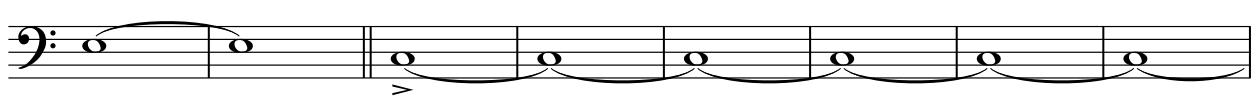
69



86



95



103

