

Tuba

dedicated to Ensemble Paris-Lodron

ABWASSERMUSIK

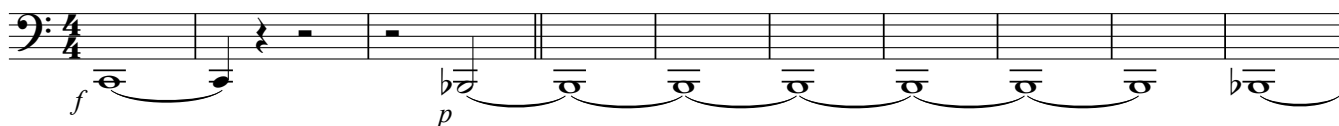
oder "Eine Nacht im Kanal"

#1 Im Anfang war es rein!

Peter WesenAuer, WWV 112

♩ = 108

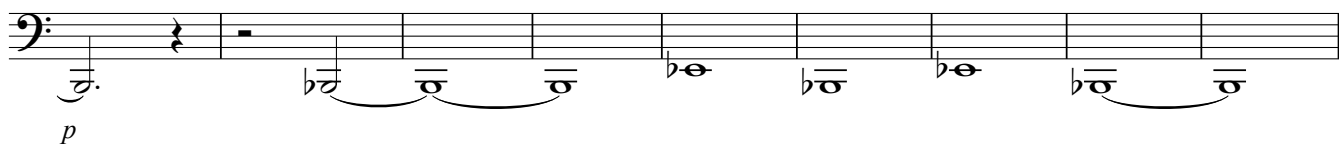
♩ = 72



11



19



28

♩ = 146



33



39



44



51



58



63



69



75

♩ = 84

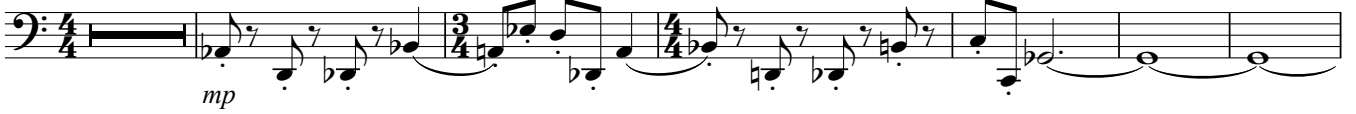


80



#2 Siphon - nie - dicht!

♩ = 60₈



15



26



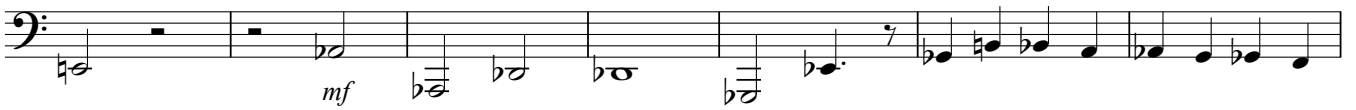
37



45



52



59 f



65

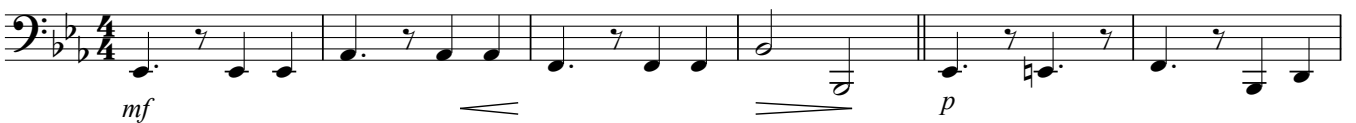


72



fuer Markus
#3 Rohrwurm

very soft!
♩ = 63



7



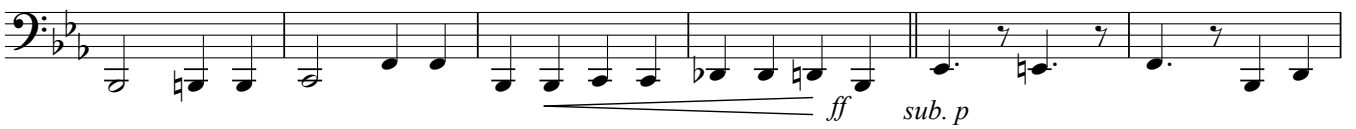
13



19



25



31



37



43



#4 Kanalisations - Ramtatatam!

♩ = 144 2



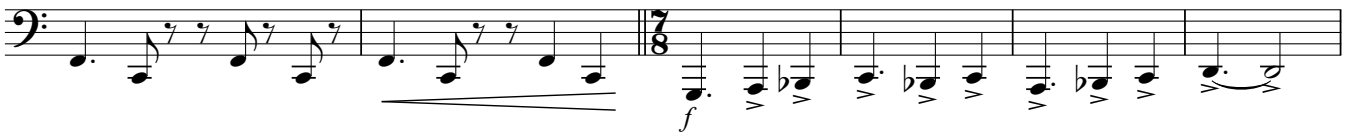
8



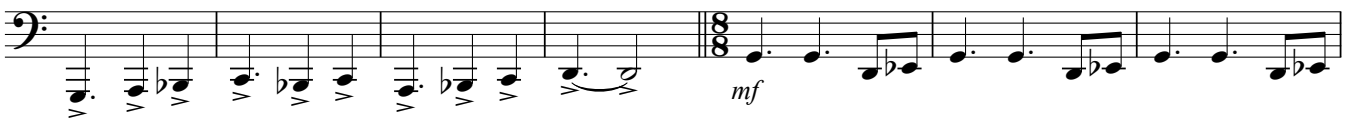
13



17



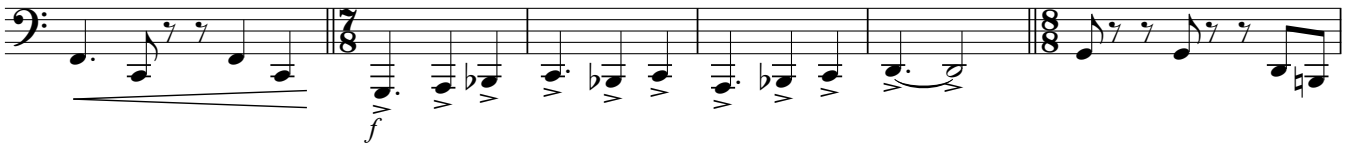
23



30



34



40



44



48



52



Tuba

61

4 4

f

74

78

♩ = 104

83

8 ♩ = 104 2

97

101

105

109

mf

115

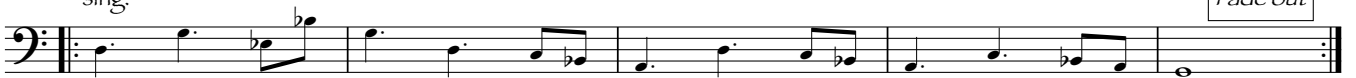


121



125

sing:



Fade out

Na, na, na, na,...

decresc.....